



IRSEL Innovation on Remote Sensing Education and Learning



Lorant Foldvary (OU)
project coordinator



Bela Markus (OU)
project manager



Malgorzata Verone
Wojtaszek (OU)
professional responsible



Thomas Bauer (BOKU)
partner coordinator



Jacek Kozak (JU)
partner coordinator



Zoltán Vekerdy (ITC)
partner coordinator



Jinming Sha (FNU)
partner coordinator



Jinliang Wang (YNNU)
partner coordinator



Sarawut Ninsawat (AIT)
partner coordinator



Pipat Reungsang (KKU)
partner coordinator

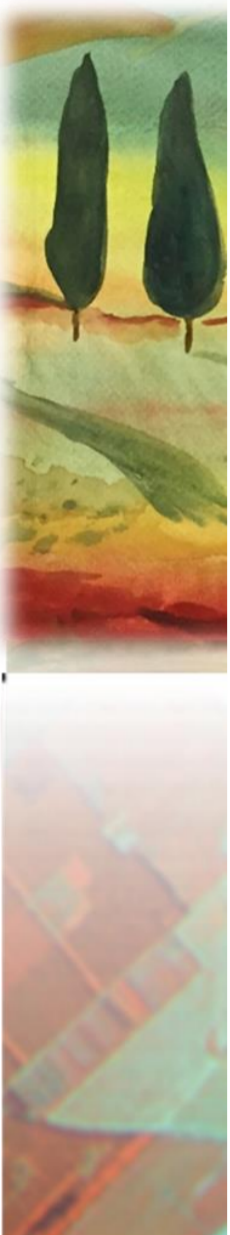
Aims, objectives

To develop an innovative learning platform, a Learning Management System (LMS) for China and Thailand.

- To ensure researchers and academic staff in RS and geospatial sciences for studies integrated into world-wide sustainability academia (research) community;
- To strengthen and integrate RS and geospatial sciences into Multi-Inter-Trans-Cross-Disciplinary sustainability studies and research of Socio-Ecological Systems;
- To enhance the role of Asian institutions in socio-ecological systems studies and researches for the benefit of Asian region;
- To promote internationalization on the relevant knowledge areas;
- To enhance international cooperation between EU and Asian universities and research institutions.

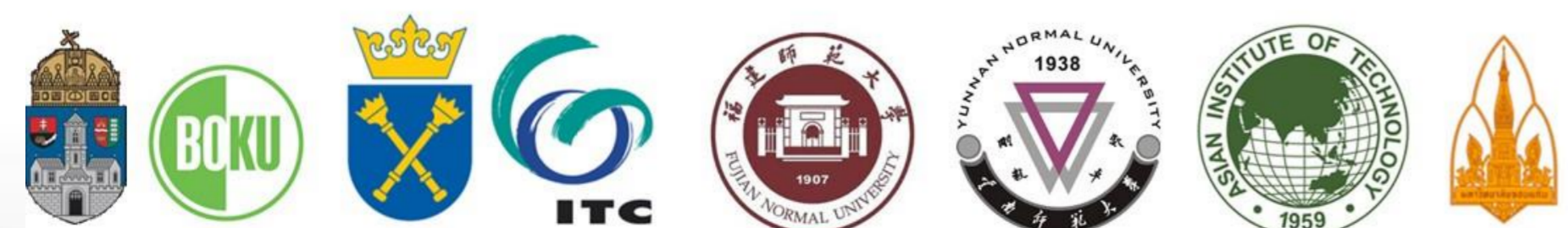
Results

- International cooperation and agreements
- New revised curricula
- 20 new modules
- 60 teachers retrained on workshops and a training
- 4 Knowledge Centres
- Knowledge sharing platform, e-Learning infrastructure, Learning Management System
- Quality Manual, Quality monitoring reports, workshop, Course Evaluation Plan
- Feasibility Study and Business Plan of Post-project Actions, Learning Guides, 20 students will be trained on a Summer School
- PR materials, project website, publications, multiplier events



Partners

- P1 Óbuda University, Alba Regia Technical Faculty - OU
- P2 University of Natural Resources and Life Sciences – BOKU
- P3 Jagiellonian University – JU
- P4 University of Twente – ITC
- P5 Fujian Normal University – FNU
- P6 Yunnan Normal University – YNNU
- P7 Asian Institute of Technology – AIT
- P8 Khon Kaen University – KKU



<http://www.irsell.eu>
Email: office@irsell.eu
Coordinator: Lorant Foldvary

The European Commission support for the production of this publication does not constitute endorsement of the contents which reflects the views only of the authors, and the Commission cannot be held responsible for any use which may be made of the information contained therein.

